



# Poland

- on the way  
to electronic monitoring  
of offenders




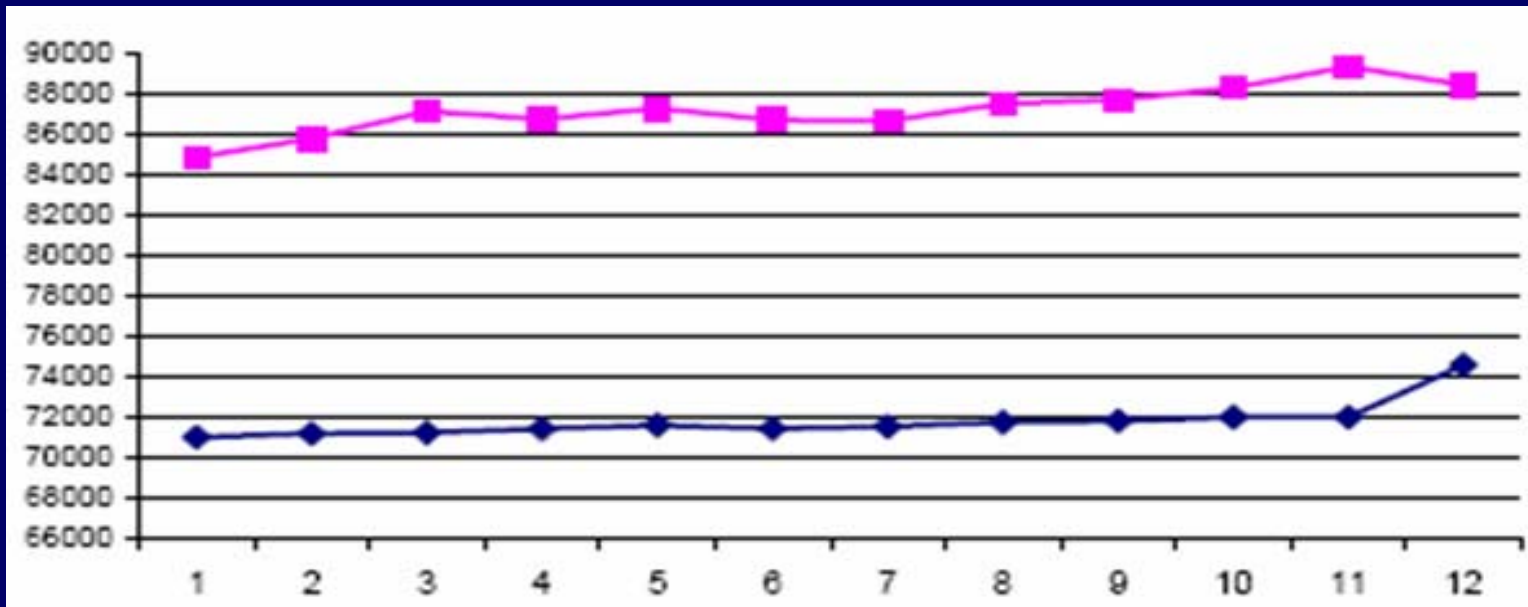
**Egmont aan Zee**

May 11<sup>th</sup>, 2007



# Prison population in Poland\*

-  prison population  $\approx 89000$
-  prison capacity  $\approx 70\ 000$



\* as of 2006

# Prisons in Poland

- 85 prisons
- Mostly built before 1945



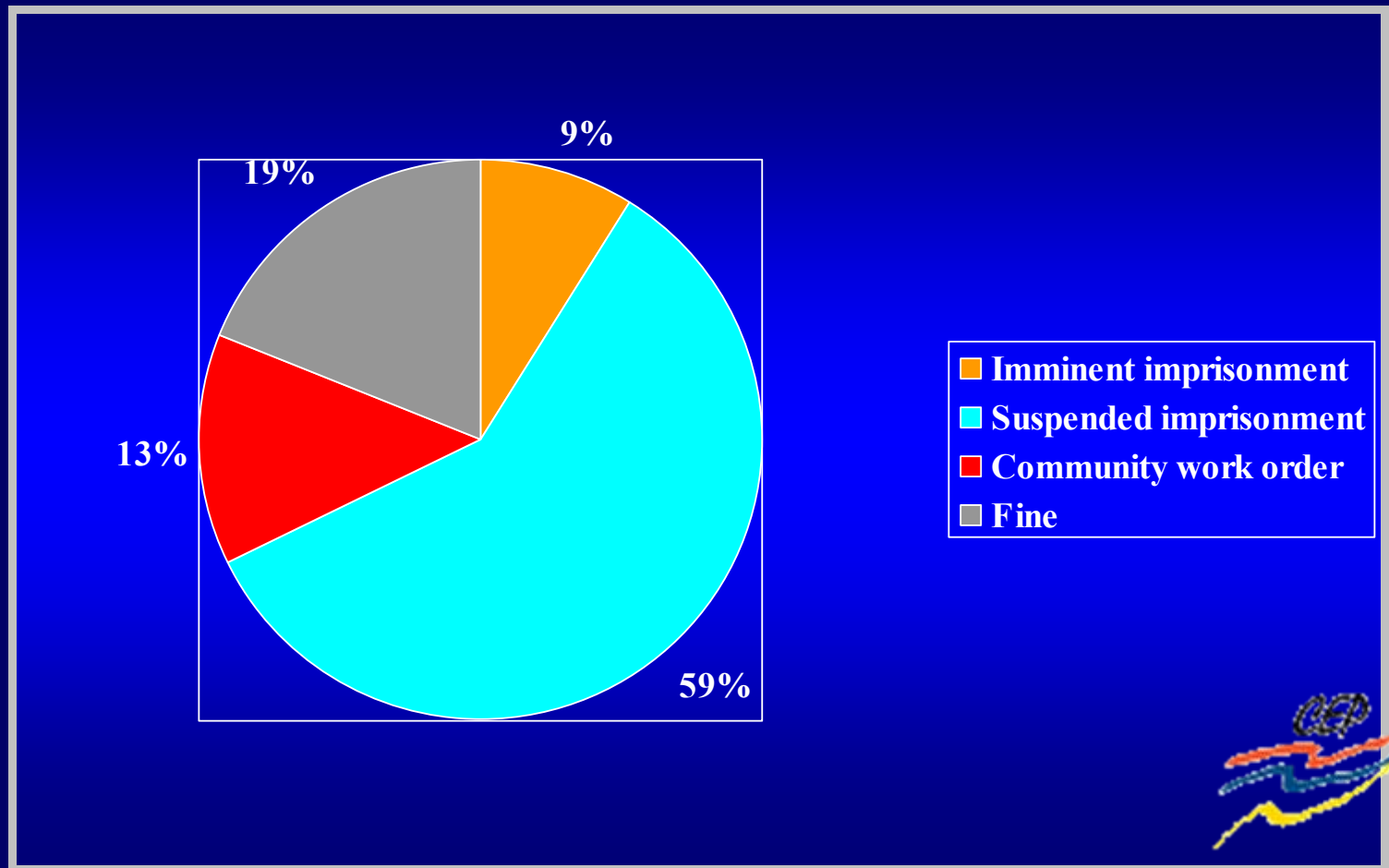
# The World Prison Population List (fifth edition)

Prison population rate per 100 K of national population

England & Wales	141
France	93
Belgium	89
Sweden	73
 Estonia	361
Latvia	352
Lithuania	256
<b>Poland</b>	<b>218</b>
Czech Republic	170

# Sanctions imposed by District Courts

January-June 2005, total: 249 532



# The Response

- Governmental programme of gaining 17,000 beds in the facilities of the prison system in the period 2006-2009
- Enforcement of imprisonment sentences outside a penitentiary facility by implementation of electronic monitoring programme



# Preparatory work

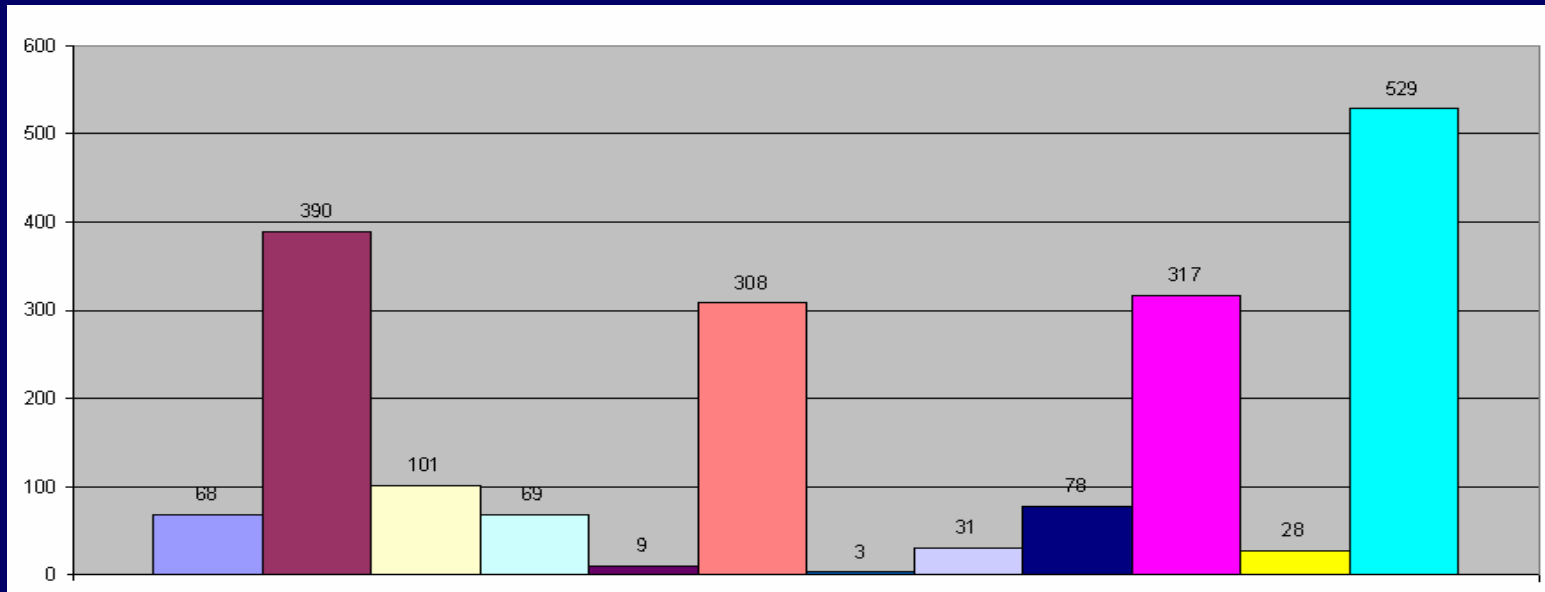
- Comparative studies of legal provisions
- Study visits to EM –leading countries
- Consultations with experts (EM, correction system)
- Dissemination: seminars and conferences
- Legal professionals' attitude survey



# The attitudes of legal professionals towards electronic monitoring

- More than 3200 questionnaires distributed
- Around 2000 respondents
- Different concepts of EM application presented in questions

# The survey: participants



■ Pententiary judges

■ I instance judges

■ II instance judges

■ Judges in training

■ Prison Service officers

■ Prosecutors

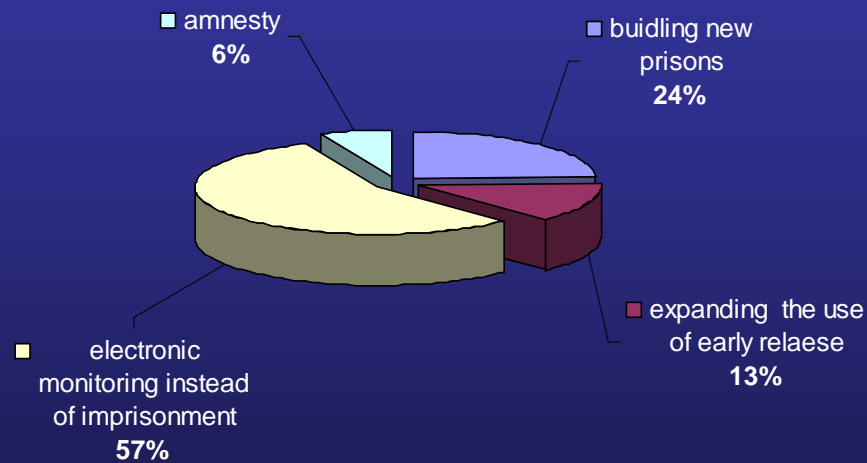
■ Probation officers

■ Probation officers' assistants

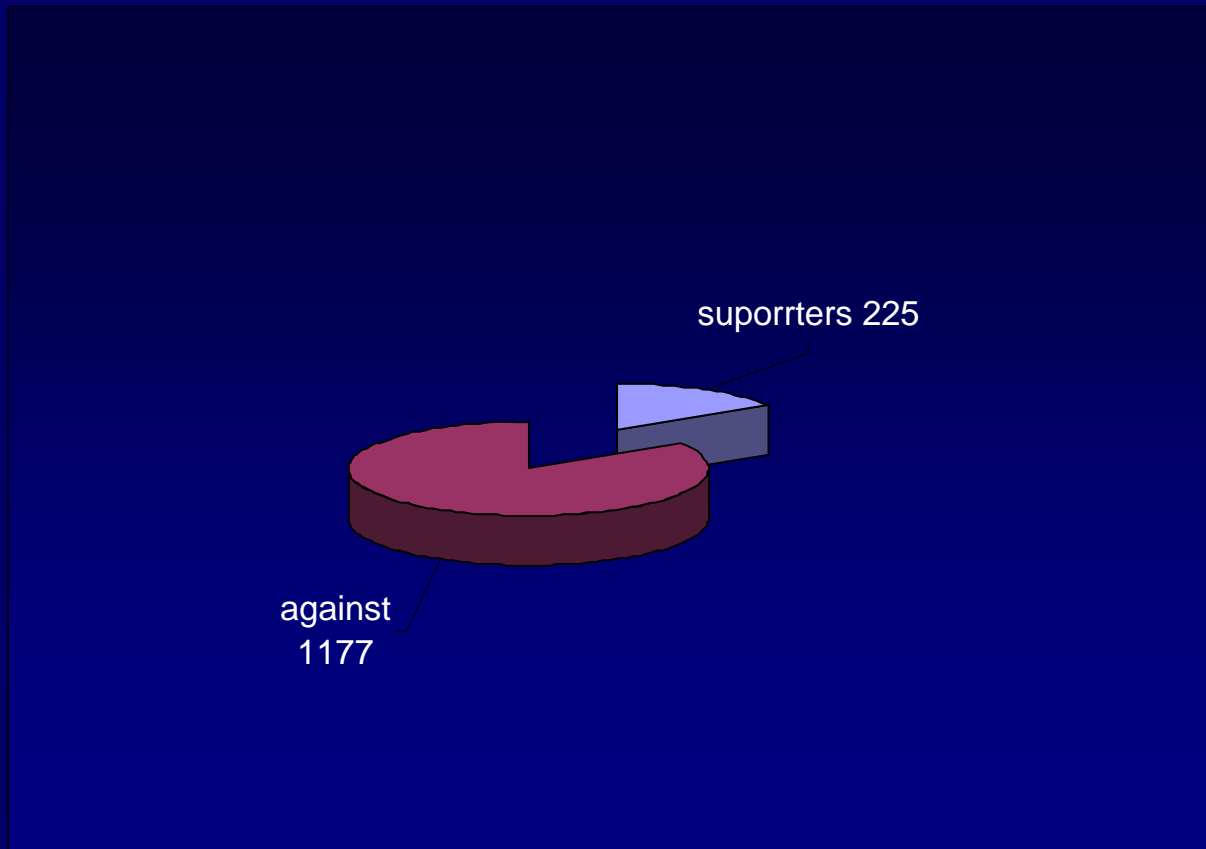
■ Defence lawyers

■ Other

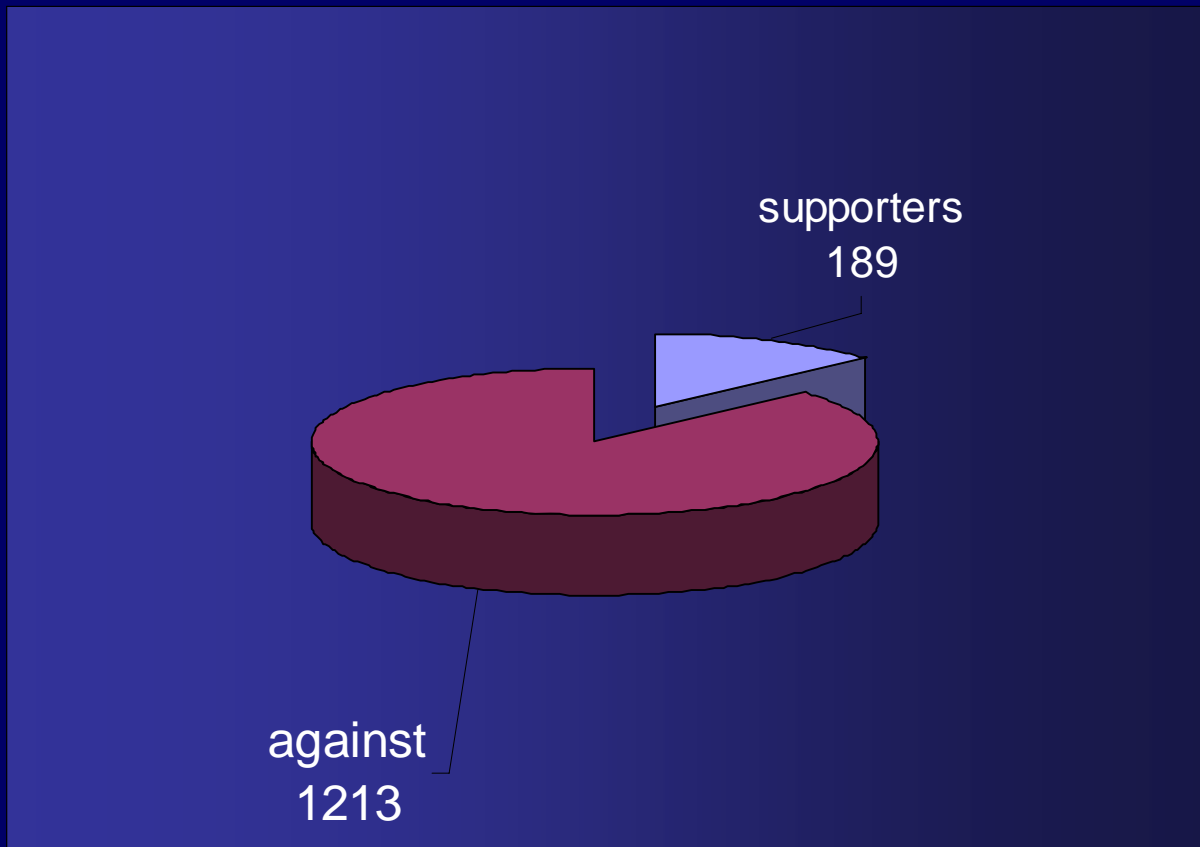
# Re: overcrowding in prisons



# Re: using EM along with conditional discharge for 2 to 5 years



# Re: using EM along with suspended custody for 2 to 5 years



# The EM Bill

Upon decision of a penitentiary court issued at the post-sentencing stage:

- in a front-door programme- a short time imprisonment term ( up to 6 months) could be served in a form of curfew with electronic monitoring
- in a back-door programme- a convict who is sentenced for up to 1 year in prison and has no more than 6 months of the term left, can serve the rest of his term under electronic supervision



# EM- the scope

- RF technology
- House arrest
- Restraining order  
(person, place)

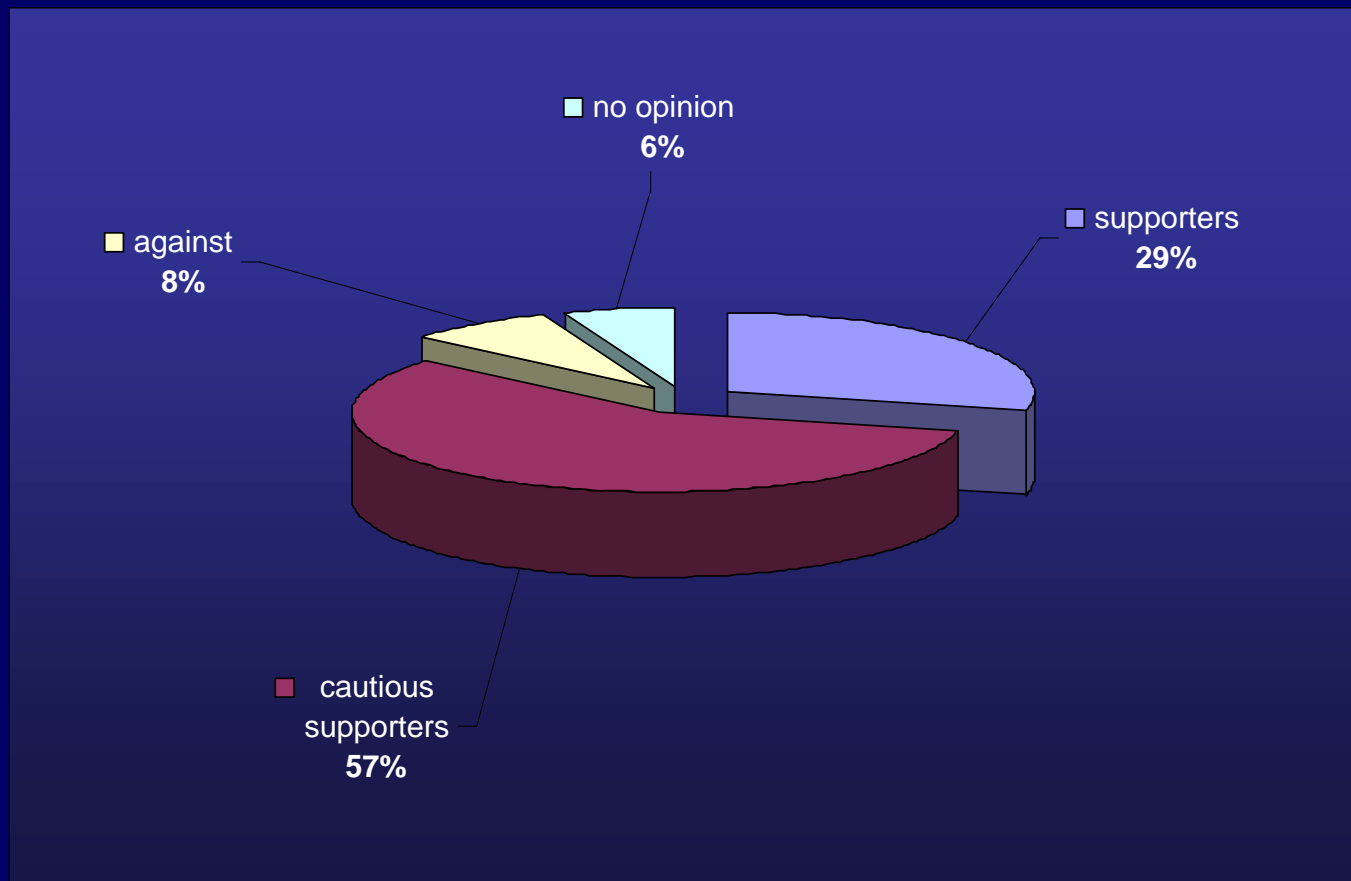


# The proposed regimes of incarceration in Poland

- Lock-up
- Semi-open
- Open
- EM



# Re : Opinions on the proposed solution



# Short time incarceration\*

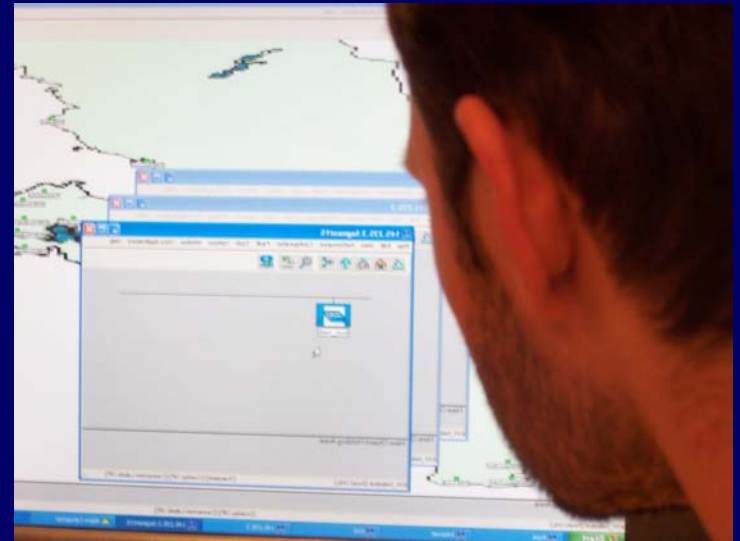
- from 1 to 3 months 760
- from 3 to 6 months 3845
- from 6 to 12 months 12290

\*as of 31.12.2007



# Monitoring of offenders: actors

- Penitentiary judges
- Probation officers
- Authorised EM service provider



# Authorised EM service provider

- Providing hardware, software and necessary infrastructure
- Installation of equipment
- Maintenance and technical control
- Data storage



Tbc.

