

ELECTRONIC MONITORING IN DENMARK

CEP

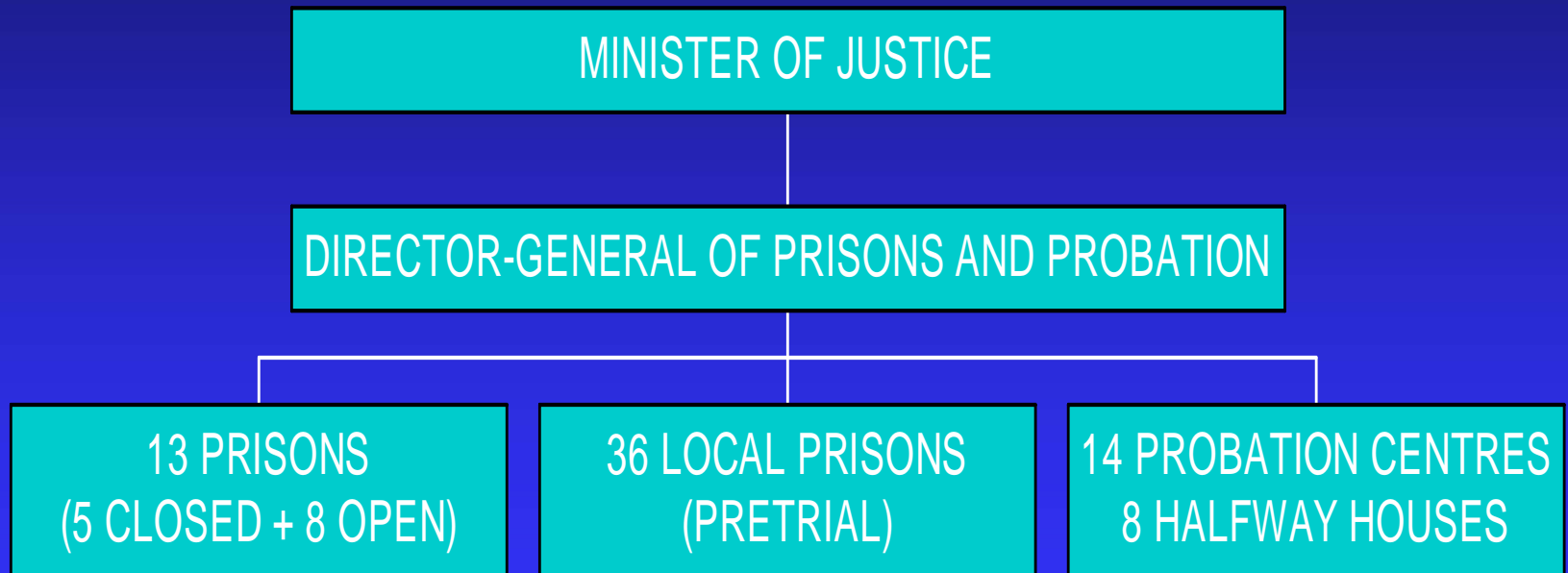
Conference on Electronic Monitoring

Egmond aan Zee

May 2007

Lisbet Heine, Chief Probation Officer

PRISON AND PROBATION SERVICE IN DENMARK



DENMARK - KEY FIGURES

- INHABITANTS: 5,3 mio.
- PRISONERS: 4.000
- PRISON RATE: 73 pr. 100.000 inh.
- PROBATIONERS: 9.000
- PRISON AND PROBAT. STAFF: 4.400
- ANNUAL BUDGET: 270 mio. euros

ELECTRONIC MONITORING

- Political interest for many years
- Survey about alternatives in 1998 – chose community service order
- Government introduced a bill in December 2004 aimed at a limited group (drunken drivers)
- Bill passed in May 2005 – start 1 July 2005
- Anticipated number: 150 daily
- As from 21 April 2006 the measure also covers young offenders up to 25 years with a maximum sentence of 3 months' imprisonment.

TARGET GROUPS

- 1) Traffic violation as main conviction
 - 2) Young persons (under 25) regardless of offence
- Max. 3 months' imprisonment
 - "Suitable":
 - Accomodation
 - Occupation
 - Other

IMPLEMENTATION

- Assessment of suitability
- Department of Prisons and Probation converts sentence
- Run by the Probation Service
- 7 (8) regions
- Special units
- Electronic system

CONDITIONS

- Not commit new crime
- Follow plan of activity
- Accept supervision and control – also unannounced
- No use of alcohol or drugs – will be tested
- Participate in a crime preventive program
- Perhaps other relevant conditions

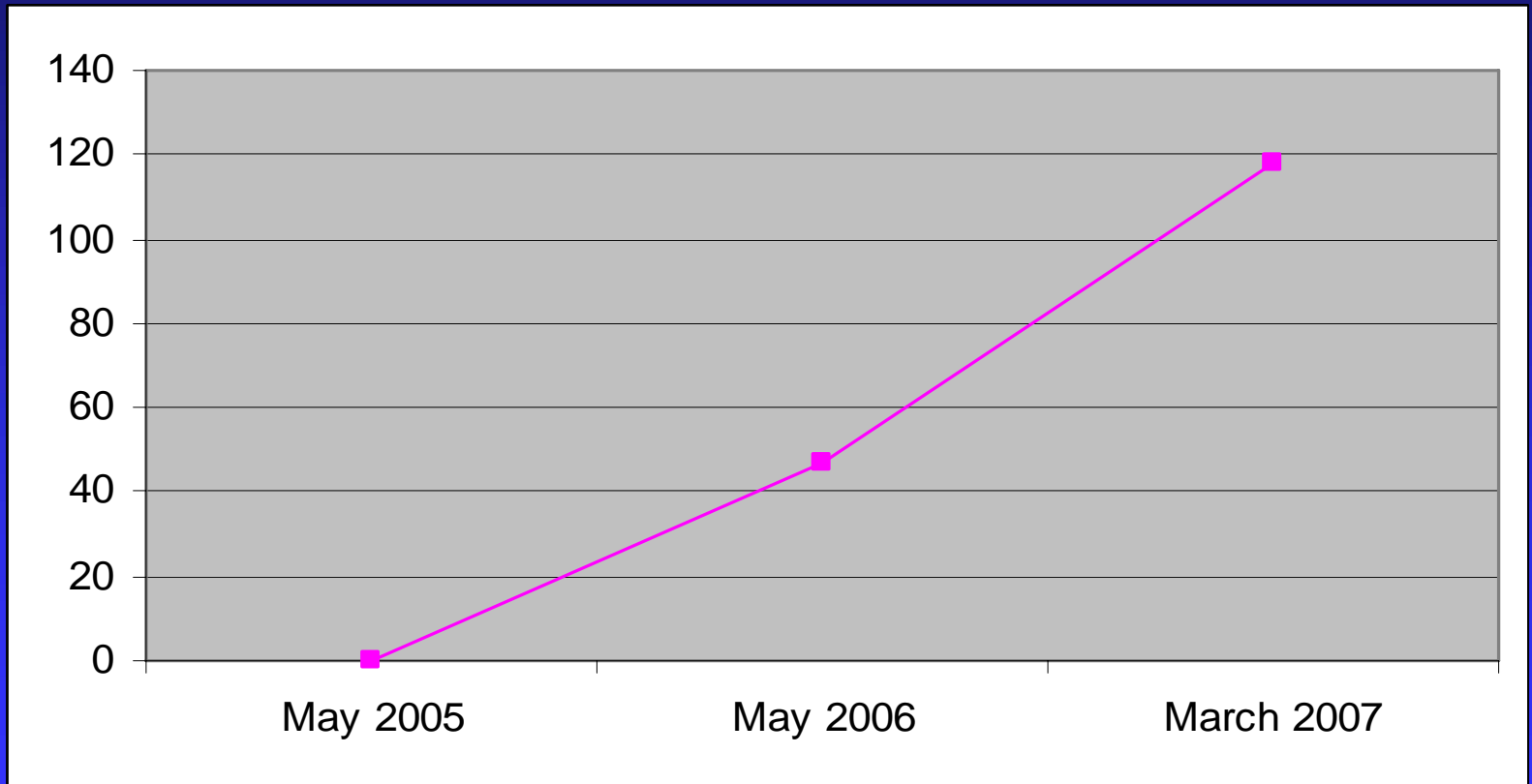
PLAN OF ACTIVITY

- Occupation
- Transportation
- Crime preventive program
- Perhaps visit to supervising authority
- 2 – 4 hours weekly for shopping etc.
- 1 hour on days without occupation
- "Leave" for special purposes

REVOCAATION

- On offender's request
- New crime
- Incarceration
- Requirements are no longer met
- Breach of conditions

INCREASE IN DAILY CAPACITY



ELECTRONIC MONITORING IN DENMARK

May 2005 - May 2007

■ Applications	2155
■ Permissions	1215
■ Implementations	992
■ Revocations	64

COSTS

	150 PRISON PLACES (OPEN PRISON)	150 PLACES IN ELECTRONIC MONITORING
PRELIMINARY EXPENSES	13 mill. euros	2.5 mill. euros
WORKING EXPENSES PER PLACE PER YEAR	38.000 euros	34.000 euros
WORKING EXPENSES PER PLACE PER DAY	108 euros	94 euros

PROBLEM AREAS

- Number of applicants to the scheme
- The technique
- Drug testing
- New working methods for the staff
 - Duty around the clock
 - Mixed professions
- Special units